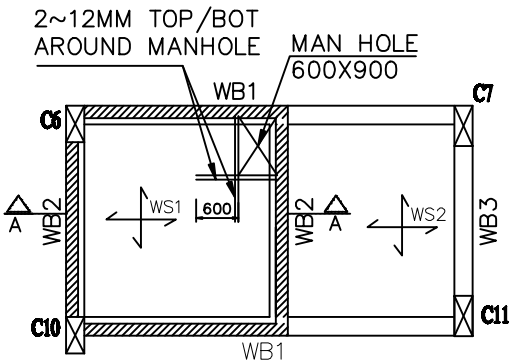


KEY PLAN AT
TANK ROOF LEVEL



KEY PLAN AT
TANK BOTTOM LEVEL

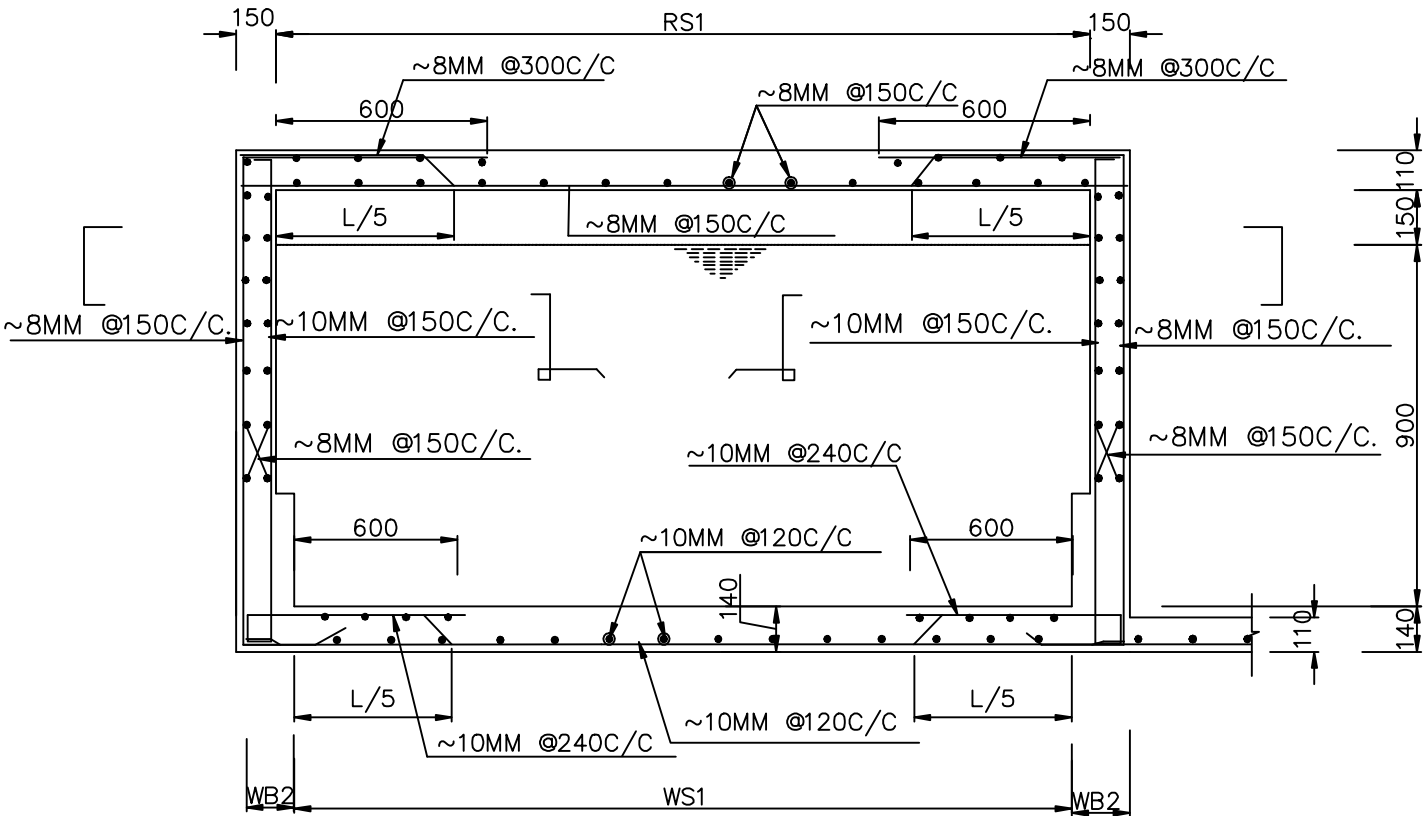
RCC DETAILS OF BEAMS (CURTAILMENT)

| TYPE | OVER ALL SIZE | | BOTTOM REINFORCEMENT | | TOP REINFORCEMENT | | | STIRRUPS | REMARKS |
|------|---------------|-----|----------------------|------------------------------|-------------------|-------------|--------------------|-----------------------------|----------|
| | B | D | FULL LENGTH BARS | CURTAILED @ L/7 FROM SUPPORT | AT CENTER | END SUPPORT | CONTINUOUS SUPPORT | | |
| WB1 | 230 | 600 | 3~ 20mm | 2~ 20mm | 2~ 12mm | 2~ 20mm | | ~8MM @ 100(6) 150(6) 200C/C | INVERTED |
| WB2 | 230 | 450 | 2~ 16mm | 2~ 12mm | 2~ 12mm | 2~ 16mm | -- | ~8MM @ 100(8) 200C/C | INVERTED |
| WB3 | 230 | 300 | 2~ 12mm | 1~ 10mm | 2~ 8mm | 2~ 12mm | | ~8MM @ 100(4) 200C/C | |

RCC DETAILS OF SLABS

| TYPE | THICKNESS | REINFORCEMENT | | REMARKS |
|------|-----------|---------------|---------------|---------|
| | | SHORT SPAN | LONG SPAN | |
| WS1 | 140 | ~10MM @120C/C | ~10MM @120C/C | TWO WAY |
| RS1 | 110 | ~8MM @150C/C | ~8MM @150C/C | TWO WAY |
| WS2 | 110 | ~8MM @170C/C | ~8MM @200C/C | TWO WAY |

ADVANCE COPY



SECTION OF WATER TANK A - A

| NO | DATE | REVISIONS: |
|--|------|------------|
| NOTES: <ul style="list-style-type: none">FOR GEOMETRIC DIMENSIONS REFER TO ARCHITECT'S DRAWINGS.CONCRETE MIX FOR R.C.C. WORK: <u>M-200</u> UNLESS STATED OTHERWISE.CLEAR COVER TO MAIN REINFORCEMENT FOOTING=50mm,COLUMNS=40mm BEAMS=30mm,SLABS=25mm PILES=50mmALL REINFORCEMENT TO BE C.T.D BARS GRADE Fe-415 EXCEPT $\phi 6$ mm IN MILD STEEL.SAFE BEARING CAPACITY OF SOIL ASSUMED: TO BE ASCERTAINED BEFORE CONCRETING.BUILDING DESIGNED FOR: LAPS FOR MAIN REINFORCEMENT COLUMNS:-46X DIA OF BAR BEAMS & SLABS - 60X DIA OF BAR. NO LAPS IN FOOTING REINFORCEMENT.CENETRING SHALL BE THE RESPONSIBILITY OF CONTRACTOR. | | |

FOR TENDER PURPOSE ONLY
U/G WATER TANK(INDICATIVE)

MAHARASHTRA NATURAL
GAS LIMITED